

**IDENTIFY:****NEIGHBOURS
IN NATURE**

Belfast Green Club Lámh Dhearg chose the theme of 'Neighbours in Nature' for their Green Club action plan. Preparing their biodiversity action plan led the Green Team to learn about the nature and wildlife native to the Belfast Hills area where the club is based. The action plan focused on how the club could protect and add to local biodiversity and on how biodiversity engagements could support the health and well-being of their club members and volunteers.

The Lámh Dhearg Neighbours in Nature motto is "Making the most of what is around us". See <https://learning.gaa.ie/greenclub/casestudies> for their Green Club story.

Below are some tips for club Green Teams who want to focus their biodiversity actions around the theme of 'Neighbours in Nature'.

Learning about your Neighbours in Nature**FIND OUT MORE ABOUT YOUR LOCAL WILDLIFE**

- Conduct a baseline survey to identify priority species and habitats present on your club ground.
- Approach volunteers from local nature conservation groups to help or collaborate with other community groups or Tidy Towns organisations.
- Involve staff and members in biodiversity surveys. There are many mobile apps available that will help you identify plants, insects and wildlife.
- If your Green Team is developing a detailed club or community biodiversity action plan and you need additional support, contact your local authority Green Club point of contact (see the point of contact list at <https://learning.gaa.ie/greenclub>).
- Consult the GAA Green Club Useful Wildlife Identification Links infosheet below.

CONNECT PEOPLE, PLACE AND NATURE.

- Consult your local history group or use the placenames list at the end of this document to identify whether the name of any townlands or areas around your club and community are linked to particular elements of the natural world or local heritage.
- Consider whether any of your biodiversity actions could celebrate these centuries-old links between people, places and nature.

ADOPT A GREEN CLUB BIODIVERSITY SPECIES MASCOT

- Are there any native bird, plant, insect or wildlife species in your area that your Green Team wants to champion, celebrate or protect? Consider focusing your biodiversity actions and communications around this species.
- Green Club Mullingar Shamrocks promoted their biodiversity actions through a competition with local children that saw 'Shambee' being adopted as the Green Team's biodiversity mascot. See https://www.youtube.com/watch?v=_XVQBuGm7x0 for the Mullingar Shamrock's Biodiversity story.



USEFUL WILDLIFE IDENTIFICATION LINKS



Bumblebees, solitary bees and hoverflies

<https://pollinators.ie/record-pollinators/id-guides/>



Wildflowers

www.wildflowersofireland.net



Birds

<https://www.rspb.org.uk/birds-and-wildlife/wildlife-guides/identify-a-bird/>

<https://birdwatchireland.ie/irelands-birds-birdwatch-ireland/list-of-irelands-birds/>



Butterflies

<https://learn.biodiversityireland.ie/courses/irelandsbutterflies>

<https://butterfly-conservation.org/butterflies/identify-a-butterfly>



Moths

<https://butterfly-conservation.org/moths/identify-a-moth>

<https://www.mothsireland.com/>



Trees

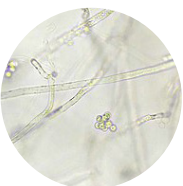
<https://www.treecouncil.ie/native-irish-trees>

<https://www.woodlandtrust.org.uk/trees-woods-and-wildlife/british-trees/a-z-of-british-trees/>



Insects

<https://www.buglife.org.uk/bugs/bug-identification-tips/>



Invasive Species

<https://invasives.ie/resources/identification-guides/>

<http://invasivespeciesni.co.uk/>



CONNECTING PEOPLE, PLACES & NATURE

Gaeilge	Béarla
abhainn	river
achadh	field
aiteann	furze, gorse
áth	ford
bá	bay
bán	white; lea-ground, grassy
béal	opening, approach, mouth
beith	birch
buaile	cattle-fold, summer-pasture
buí	yellow
bun	(river-)mouth, bottom(-land)
caol	a narrow; marshy stream
cluain	meadow, pasture
cnoc	hill
cnocán	hillock
coill	wood
coillín	little wood
coimín	common land; little hollow, glen
coll	hazel
com	hollow, coomb
comar	confluence; meeting-place
cora	weir, stone-fence, ford
corr	round or pointed hill, hollow
crann	tree
craobh	tree, branch
cruach	stack, peak
cuan	bay, harbour, recess
cuas	hollow; cove, creek
cuileann	holly
currach	marsh
dair	oak
dearg	red, red one
doire	(oak-)wood, grove, thicket
doirín	little oak-wood
dubh	black
eanach	marsh
eiscir	ridge
faiche	green (ainmfhocal/noun)
feadán	watercourse, stream
fearann	land
fíach	raven
fíodh	wood
fíonn	white
gabhar	goat
gamhain	calf
gaoth	wind
gaoth	inlet, estuary
garraí	garden, court
garrán	grove
geal	bright, white
glas	green, grey
glas	stream
gleann	glen
gléib	glebe
gob	point, headland
goirtín	little field

Gaeilge	Béarla
gort	field
gráig	hamlet; cattle-steading
gráinseach	grange, monastic farm
gréach	rough pasture-land
imleach	marginal-land, border-land
inis	island; river meadow
iolar	eagle
iúr	yew-tree
lao	calf
leaca	hillside
leamhán	elm-tree
léana	water-meadow
learga	hillside
leitir	hillside
liath	grey, grey place, grey horse
lios	ring-fort, enclosure
loch	lake; inlet
log	hollow
luachair	rushes, rushy place
machaire, maigh	plain
meall	knoll
mín	smooth or mountain pasture
móin	bogland
muine	thicket
Mullach,	hilltop
mullán	hillock; green field
oileán	Island
páirc	field
poll	hole, pool, (tidal-)stream
port	port, bank, fort
riabhach	streaked, grey
rinn	point, headland
ros	wood; promontory
rua	red; red place
sail	willow-(tree)
scairt	thicket
sceach	hawthorn, thorn-bush
seisceann	swamp, bog
sionnach	fox
sliabh	mountain, moor
srath	holm, river-meadow, valley-bottom
tamhnach	arable place, field
taobh	(hill-)side
tír	land, territory
tobar	well
tóchar	causeway
tóin	bottom(-land)
tor	tall rock, steep rocky height; bush, clump
trá	strand, beach
tuairín	little paddock, little (cultivated) field, little pasture
tuar	paddock, (cultivated) field, pasture
tulach	hillock
uinse	ash-tree
uisce	water